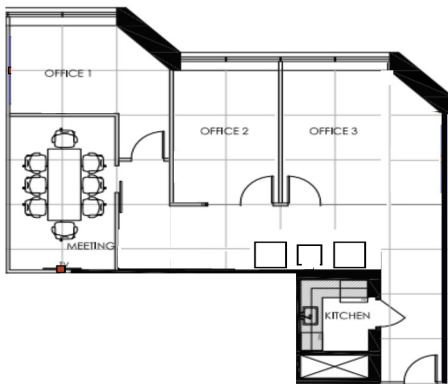
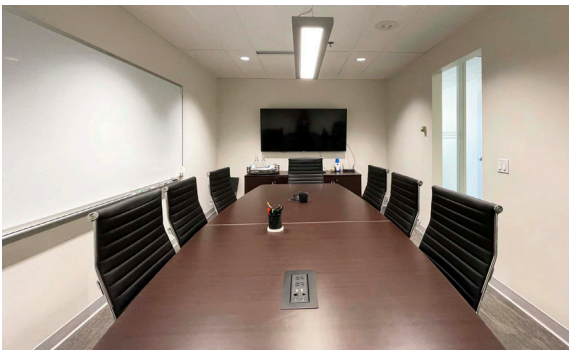
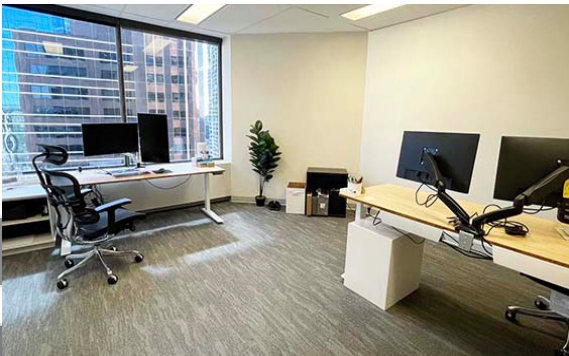


Building Highlights

- Located in the heart of the Plus 15 connected walkway
- New on-site fitness facility for tenant's use
- Upgraded common lobby
- Elevator modernization completed in 2016
- Building is BOMA Certification Level Gold

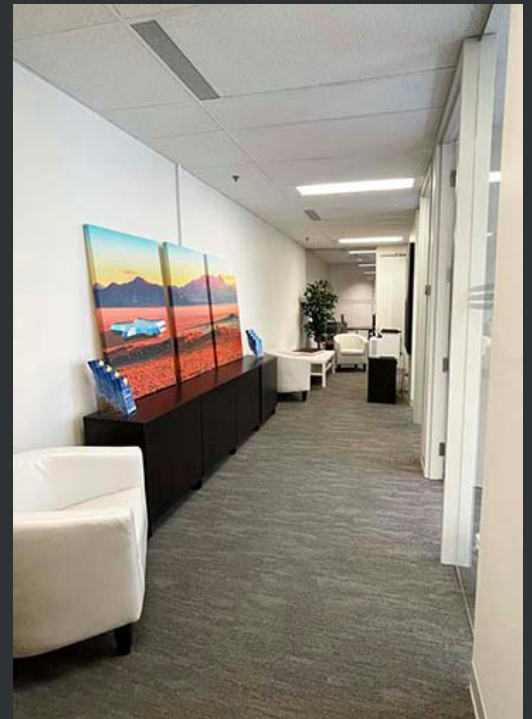
For Sublease Canada Place 407 2nd Avenue SW

Sublandlord:	Rogii Inc.
Premises:	Suite 1630; 1,377 sq ft
Term:	June 30, 2022
Available:	Negotiable
Op. Costs & Taxes:	\$15.74 PSF (est. 2021)
Net Rent:	Market sublease rates



3 offices
boardroom
kitchen

- Office space is in excellent condition
- Very efficient layout
- Furniture is available



Contact:

Jeff Thomson
587.356.2074

Jeff@COREcommercial.ca

Lori King
587.356.2075

Lori@COREcommercial.ca

